



13 Lydia Avenue Ingle Farm SA

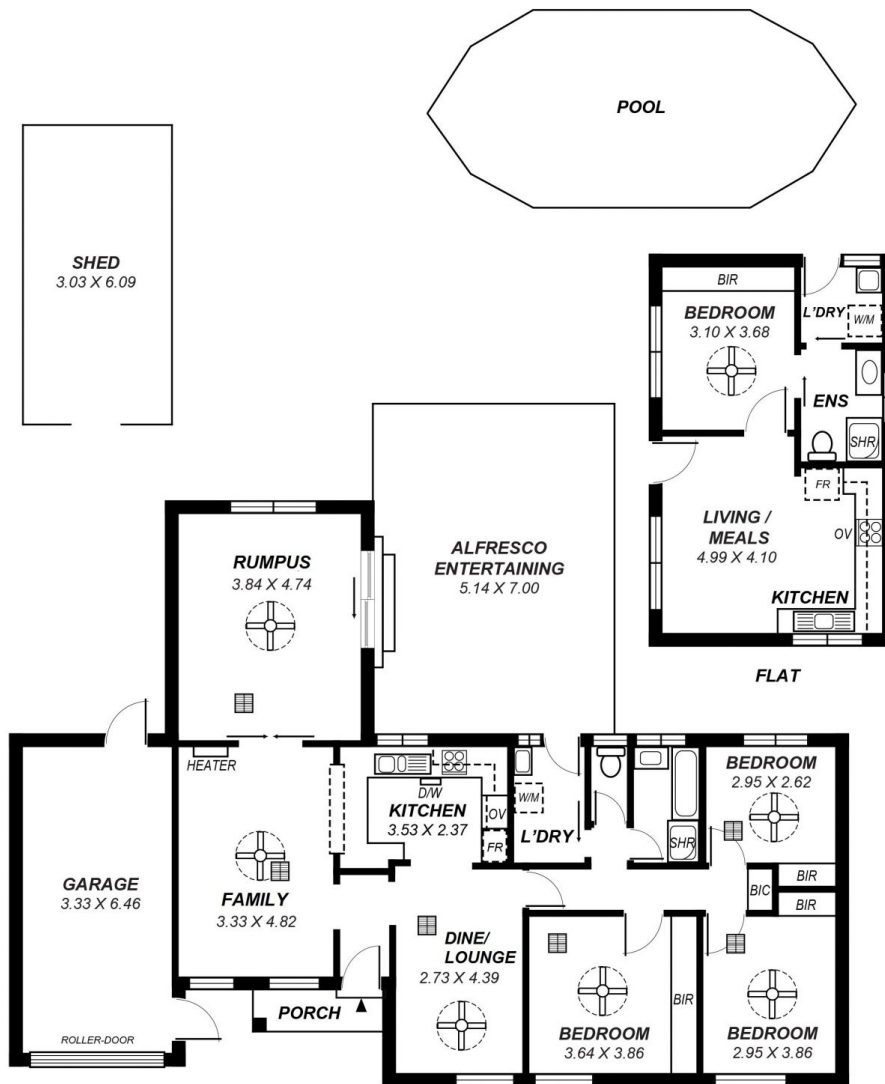
4 2 3

Features aplenty here with this well presented family home complete with fully self contained Granny Flat. Sitting on approximately 600sqm allotment and within close proximity to excellent shopping facilities and amenities, the property has a flexible floor plan and offers:

View : <https://www.adcorpgroup.com.au/sale/sa/north-north-east-suburbs/ingle-farm/residential/house/6891191>

MAIN DWELLING

- 3 good sized bedrooms, all with robes and ceiling fans
- Fully renovated bathroom with separate WC
- Lovely updated kitchen with dishwasher, gas oven and cook-tops and ample cupboards
- Separate dining or lounge
- Large open plan family / rumpus with ceiling fans
- Ducted cooling and gas wall furnace heating
- 16 panels solar 4000 watt system, awnings on all front windows
- National Broadband Network



*This drawing is for illustration purposes only .
 All measurements are approximate and details intended
 to be relied upon should be independently verified.*