



17 Hilda Terrace Hawthorn SA

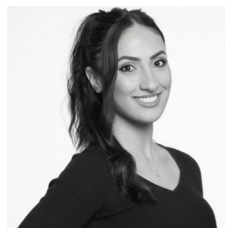
4 3 2

Situated in the heart of Hawthorn, this elegant family home offers it all. Set amongst other quality properties, 17 Hilda Terrace has a chic and comfortable living experience with plenty to appreciate. Sited on large well established 710sqm (approx) landholding, this outstanding property caters to a variety of needs and preferences and will definitely impress.

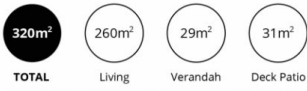
Featuring 4 double bedrooms, 3 bathrooms, an open plan kitchen, meals & family area, large rumpus room, home office or additional bedroom, impressive outdoor entertaining space with beautiful inground swimming pool and so much more.

Other features include:
Master bedroom with ensuite, ceiling fan and built in robes
3 double sized bedrooms with built in robes

Building Size : 320 sqm
Land Size : 710 sqm
View : <https://www.adcorpgroup.com.au/sale/sa/eastern-suburbs/hawthorn/residential/house/7926219>



Madeline Oppedisano
(08) 8361 3333



Scale in metres. This drawing is for illustration purposes only. All measurements are approximate and details intended to be relied upon should be independently verified.

Produced by The Fotobase Group