



115/9 Paxtons Walk Adelaide SA

1 1 1

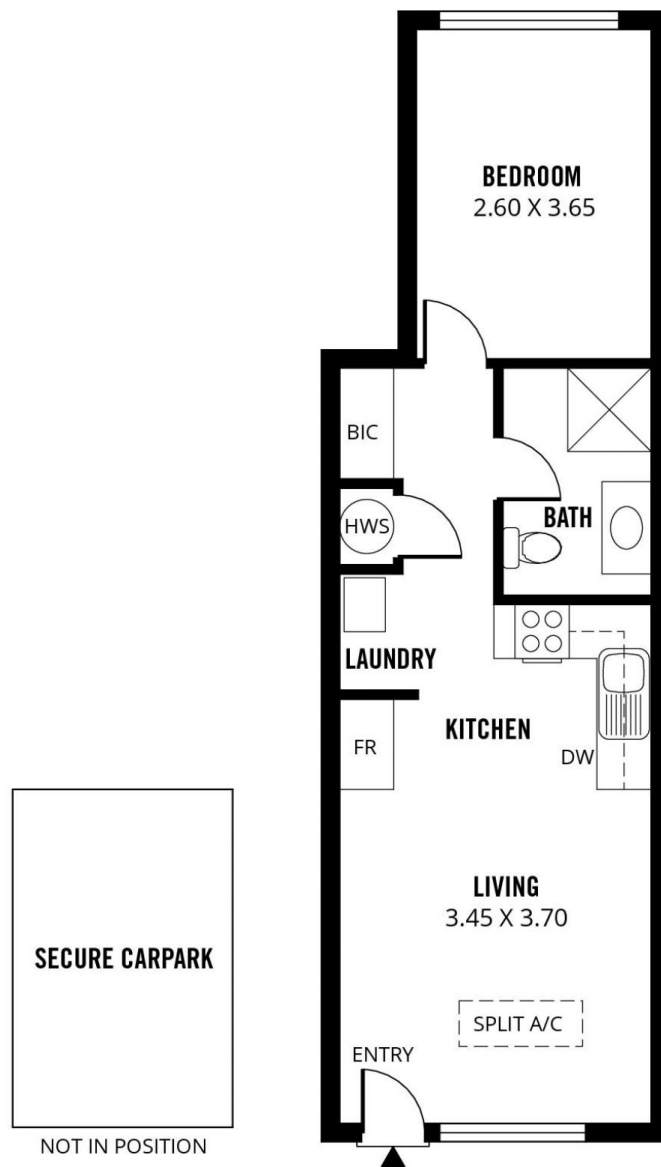
Fantastic East End living! Ideally positioned in the heart of the east end of Adelaide in the Palais Apartments sits this attractive city apartment. Boasting a central location between Rundle Street and North Terrace with everything at your fingertips, this is perfect for first home buyers, students, investors or those wanting the city lifestyle.

Price : \$ 335,000
Building Size : 54 sqm
View : <https://www.adcorpgroup.com.au/sale/sa/adelaide/adelaide/residential/unit/7961718>

Secure access to the foyer is via a fob entry and there is also a lift system with an intercom for guests. Situated on the first level the apartment offers spacious open plan living with a neutral decor and is ready to move in or rent out, with new timber flooring and paint. The central kitchen has an electric cooktop, under bench oven, dishwasher and great storage including overhead cupboards. The sleek modern bathroom has a full-size vanity and the shower has floor to ceiling tiles. There is also a separate laundry cupboard.



Frank Werner
(08) 8361 3333



45m²

TOTAL

45m²

Living

Scale in metres. This drawing is for illustration purposes only. All measurements are approximate and details intended to be relied upon should be independently verified. Produced by **The Fotobase Group**